

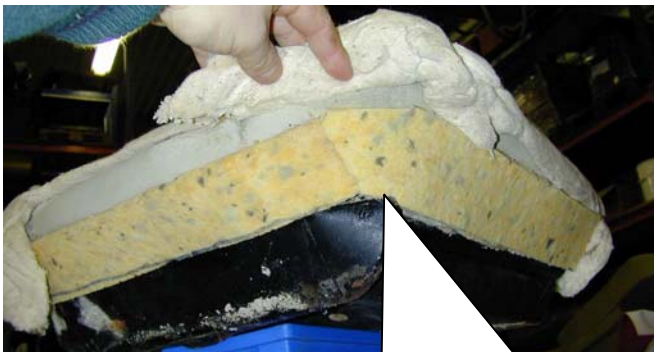
# Instructions for **VOLVO P1800** **JENSEN 61-62 & "S" 63**



- Check parts & accessories to be OK.
  - This floppy disk
  - Velcro closing 2m "hook" + 1m "loop"
  - Extra vinyl for seat frame
  - Hog rings
  - 1 pc of shaped foam for back
- Need of tool & other equipment, like glue, pliers, extra filling/padding etc.

## **FRONT SEAT & BACK**

- Demount old cover, att. inner sections are glued onto padding/cushion. Use razorblade or real sharp knife to cut loose.
- Make sure that padding/cushion is OK, -if not, improve with new material.
- We use Velcro closing (VC) on the inner section:
  - Glue (use contact adhesive) VC on to Padding/cushion inner section (se picture), on seat and back. On back the hook or loop of VC is sewn, on seat glue on to new cover.



Extra padding on seatfoam from a 61-62, to support sides and front from collapse.



Velcro closing "loop" glued onto backrest core, compare to upholstery to fit at right place.

- This will give you a chance to remove and put back cover without destroy anything when mounting (originally it was glued directly to cores).



The same method as on backrest is used on seats for glue VC onto core/foam padding

- At this stage (when glue is dried and VC is attached) you can start fit covers on. Start with inner section VC, work your way to fit the rest, put extra padding in if necessary.



On 63 "S" (6000-8000) year model, this holes in foam are filled with padding. Also sides front under are padded extra from 61-61 year model. And on sides on top of seat (sitting area). This action makes the 63 year model look a little higher and thighter.



Result from changing upholstery to new one from Veteranproduktur AB.